

The *Miller Success Factors Assessments* are self-report instruments that deliver scores for each of nine Success Factors. The resulting scores reveal core strengths and provide indications for future professional development. These Success Factors (discovered by Dr. Julie Miller in her extensive research) lie at the heart of all success and include:

Vision	Passion	Perseverance
Self-Motivation	Risk-Taking	Positive Thinking
Creativity	Compassion	Seizing Opportunities

Our Three Assessments

1. **MSFA for Individuals** – focuses on individuals in their life.
2. **NEW! MSFA for Individuals Inside Companies** – focuses on individuals inside the organization in which they work.
3. **NEW! MSFA for Organizations** – focuses on the organization as a whole.

Excerpted Questions from each Assessment

Following are sample questions for the three assessments. We have included one question for the Success Factors of vision, passion, and perseverance. **Note:** The *context* is what distinguishes one assessment from another.

MSFA for Organizations

VISION: Our company is crystal clear on who we are and what we are building.

- Not at all like our company Unlike our company Somewhat like our company
 Like our company Very much like our company

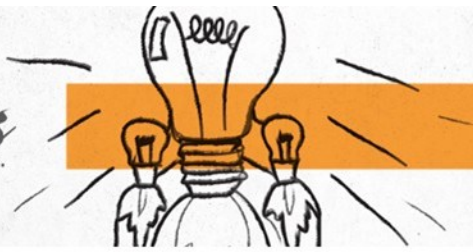
PERSEVERANCE: Our company holds firm to its purpose even when faced with setbacks and obstacles.

- Not at all like our company Unlike our company Somewhat like our company
 Like our company Very much like our company

PASSION: People in our company are energized and inspired by what we do and who we are.

- Not at all like our company Unlike our company Somewhat like our company Like our company
 Very much like our company





MSFA for Individuals Inside Companies

VISION: I have a very clear picture in my mind of who I want to become inside this company.

Not at all like me Unlike me Somewhat like me Like me Very much like me

PERSEVERANCE: I am reliable for 'staying the course' and doing what it takes to fulfill my responsibilities within this company.

Not at all like me Unlike me Somewhat like me Like me Very much like me

PASSION: I love my work!

Not at all like me Unlike me Somewhat like me Like me Very much like me

MSFA for Individuals

VISION: I have a very clear picture in my mind of what I want to achieve in life and who I want to become.

Not at all like me Unlike me Neutral Like me Very much like me

PERSEVERANCE: I am reliable for 'staying the course' and doing what it takes to achieve my goals and fulfill my commitments.

Not at all like me Unlike me Neutral Like me Very much like me

PASSION: I love my life!

Not at all like me Unlike me Neutral Like me Very much like me

You Choose the Assessment that works for you!

You choose the assessment based on the information you wish to discover.

1. Do you want to see how an individual functions out in the world relative to these nine Success Factors? Choose *MSFA for Individuals*.
2. Do you want to determine how this individual functions inside the company? Choose *MSFA for Individuals Inside Companies*.
3. Do you wish to see how the organization as a whole functions relative to these nine Success Factors? Choose *MSFA for Organizations*.

Note: Detailed reports are provided for each assessment.

The Big Three Success Factors are the source of success.

They are the foundational, critical components that determine whether you will be successful in any area of life and any project you undertake.

